

A detailed microscopic image of plant tissue, likely a stem or root, showing various layers of cells. The image is oriented vertically, with the central axis running from top to bottom. The outer layers consist of small, rectangular cells, some of which are stained purple. The inner layers show more complex structures, including elongated cells and vascular bundles. The overall appearance is that of a cross-section of a plant stem, with distinct layers of cortex, pith, and vascular tissue.

## The idea?

To create a chic and trendy atmosphere, '33Design©' offers a range of high-quality wallpapers, easy to install without glue, untearable, uncrushable and repositioned at will. These unique adhesives feature original, modern and oniric patterns, imagined by Belgian designer Cédric Haeseleer. Their peculiarity lies in the transcendence of genres, patterns and textures for a result, miles from traditional wallpaper.

## The creation?

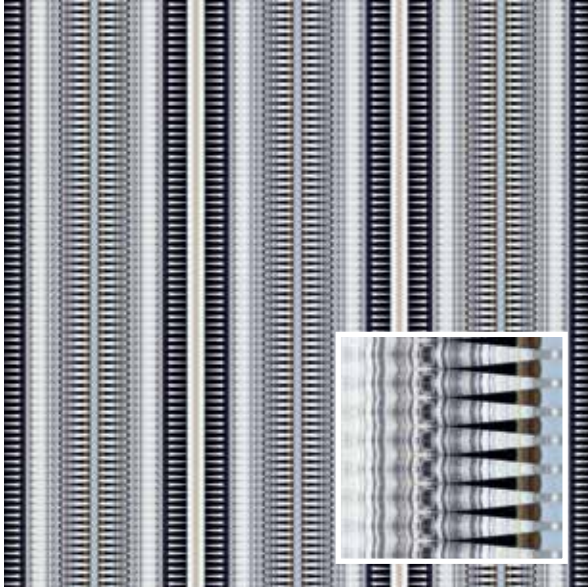
Passionate about architecture and interior design, bargain hunter and amateur handyman, Cedric Haeseleer cuts an infinite amount of pieces of paper, sorts them by curve, by color ... and assembles them into a soft sensual play, seizing surprises. The result is a board from another dimension that he photographs and reworks digitally. Each of his 'wallpaper' compositions is subject to interpretation by the look, the distance, the touch.



## Behind '33Design©'?

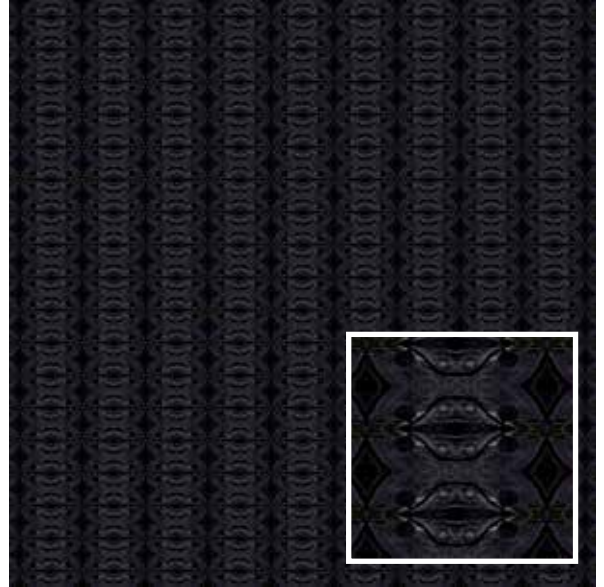
Bathed in a circle of artists since his childhood, Cedric Haeseleer started cinema studies before naturally heading towards pure graphics. His passion for design led him to redraft, rethink every single object found here and there. This love of graphic design and decoration will lead him to advise his close friends and family their different projects. Today, working with a handful of architects conquered by its 'wallpapers', Cedric launches '33Design©'.

## The collection 'cederico8' and its 8 themes



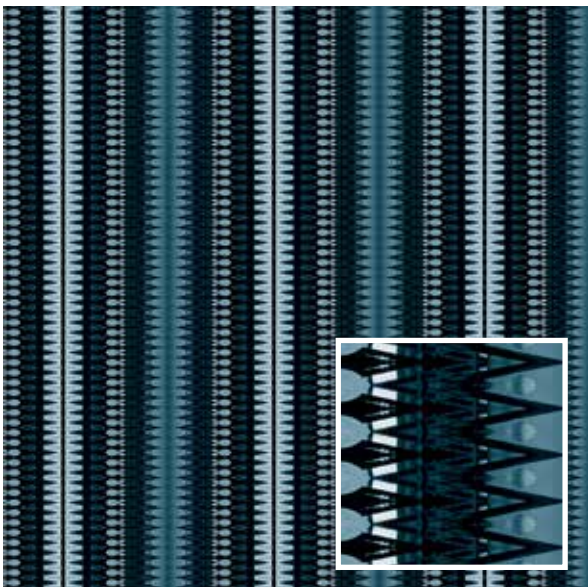
Adecone - cederico8

Adecone gives us a structured and geometric rendering. Gentleness is born from tridimensional cones driven by a dizzying perspective. The gray-blue and purple tones harmonize perfectly in different places of the house.



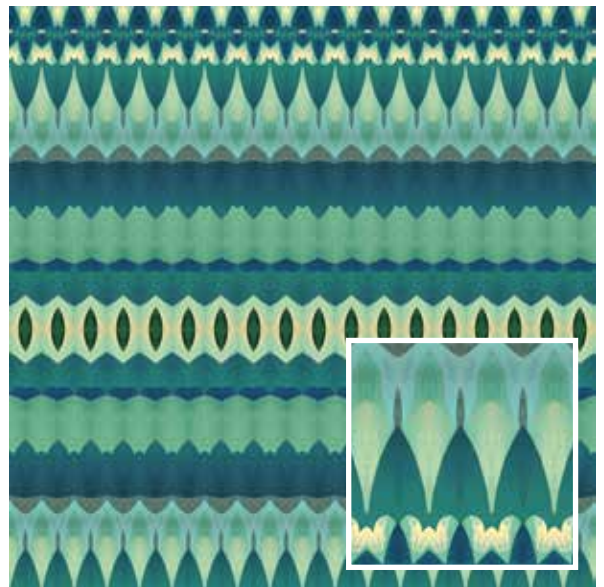
GlamBlack - cederico8

GlamBlack is a feast for the eyes: a glamorous design with a subtle touch of hardness brought by the presence of leather in the graphics. Here, the tone plays with a darker palette of gray and black, with a light eroticized eggplant reflect.



Adecoblue - cederico8

The few curves shown in Adecoblue designs soften the atmosphere the very straight atmosphere by a 'vintage feeling'. Available in turquoise blue and shades of beige brown.



Lagoon - cederico8

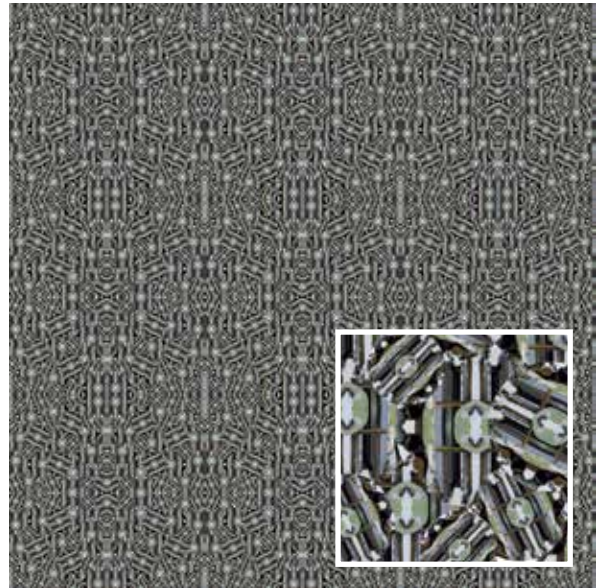
Lagoon or Orient's is wrapped by a southern seas halo. An ode to relaxation and well-being.

## Huit thèmes composent la collection 'cederico8' :



Mind - cederico8

Mind is certainly a spiritual inspiration with a declination and white and ubiquitous curves, which results in a restful and relaxing feeling that invites you, awaits you...



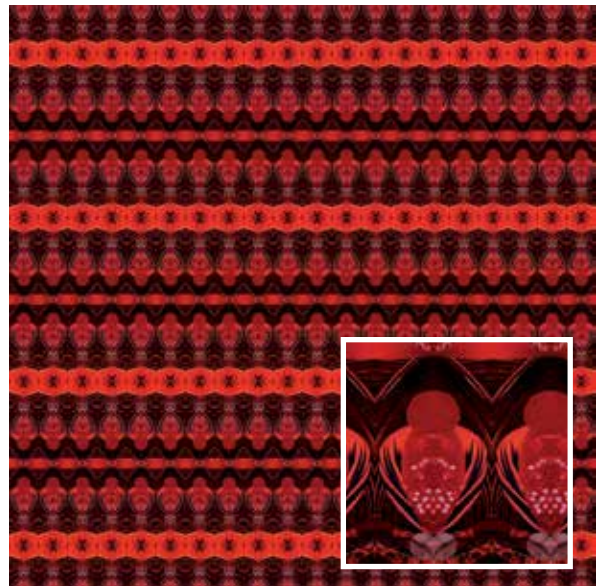
Traffic Jam - cederico8

A multitude of rounds in rounds create Traffic Jam, where a visible disorder conceals a well-structured circular order. Contrast of soft and bright colors with darker tones.



Fleurs du Mâle - cederico8

Les Fleurs du Mâle: the wise marriage of several human body parts, beautifully cut and arranged, multiplied at will. From a simple suggestion arises eroticism. A collection that tickles oneself's imagination with warm colors of tanned flesh.



One for Love - cederico8

Red love, red heart, red passion version of Art Deco define OneForLove. Touches of jet and veiled oriental graphics for smoothness, sensuality and coziness.



And wallpaper, from the collection 'cederico8' trend and design, bring the walls freedom of inspiration, elegance and power of expression like no other. High quality, anti-flammable and easy to maintain, the 'wallpapers' illuminate the interiors with panache.

8D esion

33 Design thank:

**Photographer :** Fabrice DEBATTY

**Editor :** Nathalie WARNY, Géraldine CAPRON

**Graphic design and layout :**

Onessa DEMONCEAU, Cédric HAESELEER

**Designer:** Cédric HAESELEER